

**T**

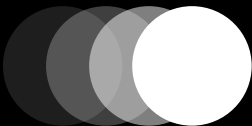
**trame**



**R**



**a mutaforma collection**



**M**

**Mutaforma**  
**è il brand italiano che**  
**lavora nell'ambito dei**  
**materiali aumentati**  
**a partire dal vetro**  
**grazie all'impiego di**  
**nanotecnologie.**  
**Particelle di dimensioni**  
**nanometriche, con**  
**specifiche proprietà**  
**chimico-fisiche, vengono**  
**depositate su matrici di**  
**vetro cambiandone le**  
**caratteristiche ottiche e**  
**la valenza estetica.**  
**Un nuovo materiale**  
**stratificato, composito,**  
**intelligente con una**  
**vocazione naturale**  
**ad innestarsi in altri**  
**materiali aumentando**  
**le opportunità**  
**d'interazione ed**  
**esperienza:**  
**augmented materials.**

*Mutaforma*  
*is the Italian brand that operates in the field of*  
*augmented materials through the application of*  
*nanotechnology.*  
*Nanometric particles with specific physical and*  
*chemical features, sublimed on the vitreous*  
*surface at molecular level, change the optical*  
*properties of glass and its aesthetic significance.*  
*A new stratified, composite and smart material*  
*with a natural tendency to merge and graft*  
*with other materials to augment experience*  
*and interaction options: augmented materials.*

# Manifesto

**I materiali della nostra vita rappresentano qualcosa di più della loro funzione pratica.  
Sono la nostra seconda pelle.**

**Custodiscono la memoria,  
sono sempre intorno a noi.  
Danno forma alle nostre esperienze e sono  
l'involucro delle nostre emozioni.  
Costituiscono un incantevole miscuglio  
tra fascino e funzionalità.  
Raccontano la nostra storia.**

**Con l'interesse e l'obiettivo di nutrire queste  
connessioni, proponiamo e orgogliosamente  
produciamo in Italia un materiale ad  
alta tecnologia caratterizzato da proprietà  
fisiche, accostamenti produttivi e  
creativi inediti.**

**Il nostro sguardo è irrequieto,  
scandagliante e ardito:  
cerca continuamente di distillare estratti  
per un nuovo Rinascimento della materia  
nel primo quarto di Luna  
del 21° secolo.**

*Materials in our life  
mean more than their practical function,  
they are our second skin.*

*Materials trigger memories, surround us,  
shape our experiences and encase our emotions  
in an enchanting combination  
of fascination and functionality.  
Materials tell our story.*

*Committed to nurturing such connections,  
we proudly manufacture in Italy a high-tech  
material characterised by innovative,  
productive and creative features,  
taking special care of the sensory and emotional  
dimensions the material entails.*

*Our eye is restless, exploratory and dauntless:  
constantly on the lookout for the essence of a new  
Renaissance of materials  
in the first quarter Moon  
of the 21<sup>st</sup> century.*

Winner 2018



**La Fondazione Altagamma riunisce le eccellenze dell'industria culturale e creativa italiana considerate ambasciatrici del Made in Italy nel mondo e promuove il Premio Giovani Imprese - "Believing in the Future", in collaborazione con Borsa Italiana, Maserati e SDA Bocconi.**

**Nel 2018 Mutaforma si è aggiudicata il Premio come miglior brand emergente nella categoria Design, per la qualità e l'innovazione dei propri prodotti.**

*Altagamma Foundation gathers high-end Italian cultural and creative brands, globally recognized as authentic ambassadors of Italian style, and promotes the award "Premio Giovani Imprese – Believing in the Future", in collaboration with Borsa Italiana, Maserati and SDA Bocconi.*

*In 2018 Mutaforma received this prestigious Prize as the best emerging brand in the Design category, thanks to the quality and the innovation in their products.*



# TILLA®

The smallest squared glass tesserae in the world

■  
(1,5 mm - real scale)

**TILLA® è la tessera in vetro più piccola al mondo (1,5 x 1,5 x 1 mm), resa possibile dalla tecnologia proprietaria del brand. Composta da 17 nanolayer dallo spessore infinitesimale, è compatta, raffinata, intelligente, leggerissima e caratterizzata da una elevata resistenza.**

**All'origine di TILLA® c'è la volontà di declinare il mosaico in vetro attraverso nuovi scenari progettuali e sfide del design.**

**“Rain” è il tratto distintivo del processo creativo Mutaforma: un posizionamento delle tessere che permette di ottenere una resa dei dettagli ineguagliabile, grazie alla caratteristica disposizione ad «opus incertum» delle pico-tessere TILLA®.**

**La creatività esplode, il design prende forma.  
I colori sfumano e ricreano l'intero spettro cromatico.**

*TILLA® is the smallest glass tessera worldwide (1,5 x 1,5 x 1 mm) created thanks to the brand's unique proprietary technology. With its 17 nanolayers of infinitesimal thickness, TILLA® is compact, refined, smart and lightweight. A superior product, offering virtually unlimited durability.*

*TILLA® was created to bring the art of glass mosaics a step forward, making it the perfect fit for new architectural scenarios and design challenges.*

*Mosaic tesserae are set in a unique “Rain” technique, distinguishing feature of Mutaforma: the peculiar effect obtained with the TILLA® pico-tesserae positioning is based on the «opus incertum» placement, which ensures unparalleled details.*

*When creativity is unleashed, design comes to life.  
Colours tone down, creating new hues and sensations.*

# TRAME

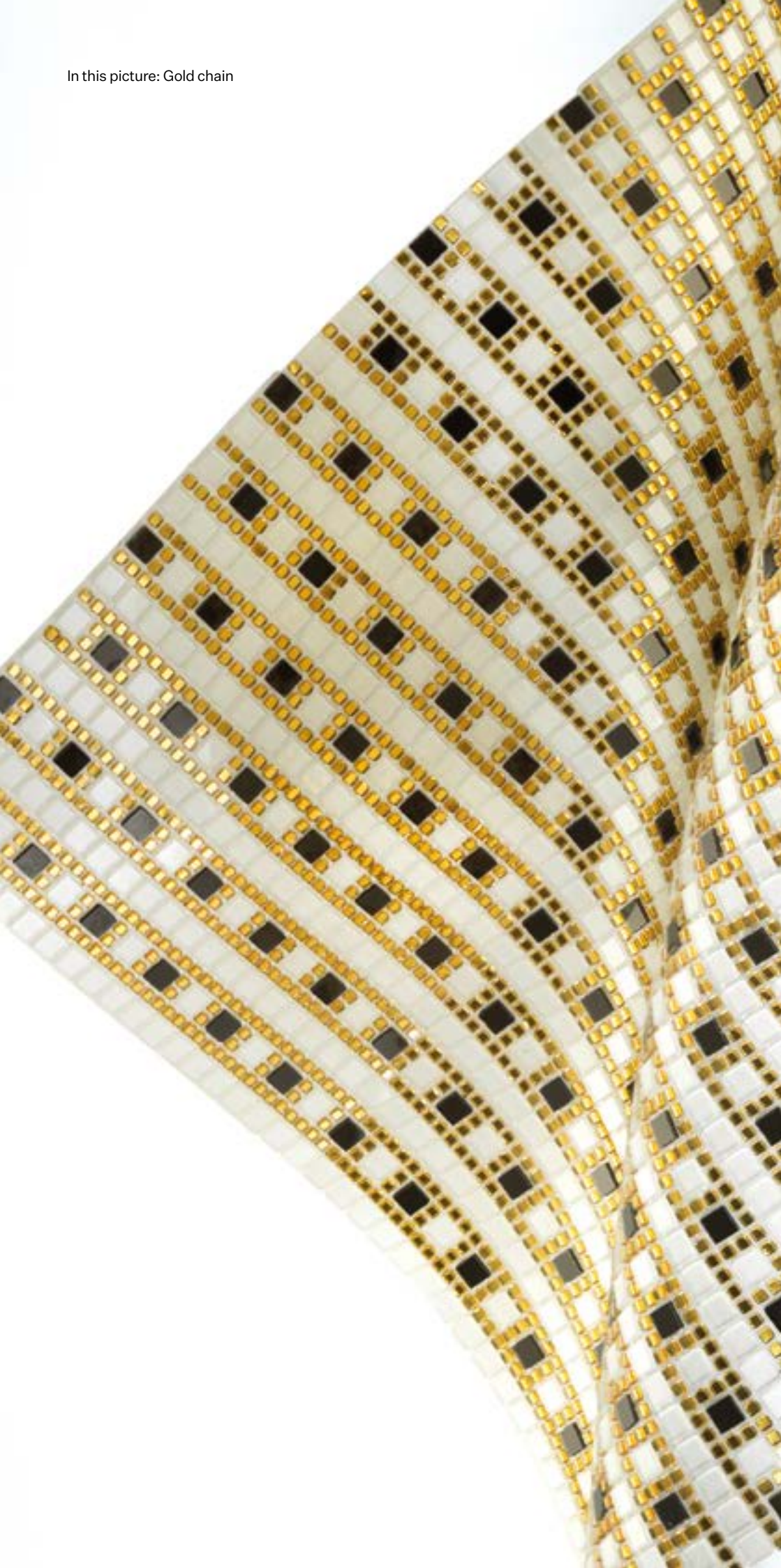
design by  
Roberta Scumace



**Nelle TRAME la storia passa direttamente dalla singola tessera. Ogni TILLA® esprime un racconto completo, il mosaico diventa quindi un insieme denso di racconti che si combinano: da leggere attraverso la luce. Dentro TRAME si può vedere la materia che si pensa luminosamente. Tutto è così minuziosamente preciso, che quasi non si capisce da dove nasce l'emozione. Nasce dalla luce. La luce è dentro e fuori. È strumento che fa vedere.**

*In TRAME, each tessera is imbued with storytelling. With each TILLA® telling a complete story, mosaics turn into a vivid ensemble of intertwined tales - revealed by the light. Within TRAME, materials reveal their inner brilliance. Everything is so minutely detailed; you almost lose track of the source of emotions. Emotions originate by light. Light, inside and outside. Light is the tool that makes you see.*

In this picture: Gold chain



# Indice


*Index*

<b>Le città invisibili</b> <i>Invisible cities</i>	12
<b>Oceano mare</b> <i>Ocean sea</i>	20
<b>Lolita</b> <i>Lolita</i>	28
<b>Sotto il vulcano</b> <i>Under the volcano</i>	38
<b>Formati</b> <i>Formats</i>	47
<b>Voce di capitolato</b> <i>Technical description</i>	48
<b>Dati tecnici</b> <i>Technical data</i>	49
<b>Informazioni tecniche</b> <i>Technical info</i>	50



le città invisibili  
invisible cities





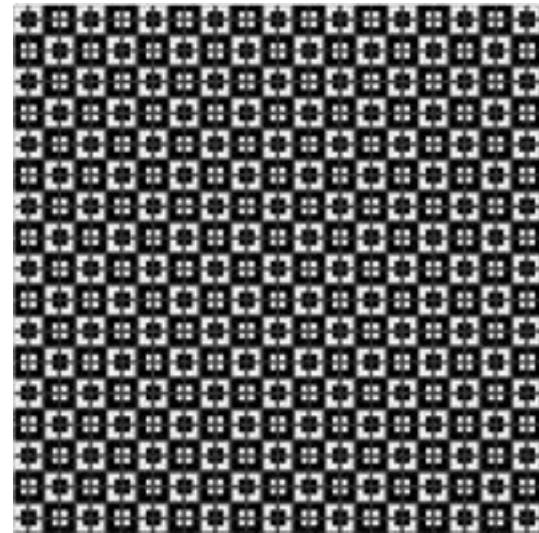
PORTE DI ALABASTRO  
TRASPARENTI ALLA LUCE DEL  
SOLE, COLONNE DI MARMO CHE  
SOSTENGONO FRONTONI, DISTESE  
DI LAMIERA BALUGINANTE,  
CIRCUITI NERI, MURI CIECHI CON  
SCRITTE D'AMORE. CEMENTO.  
SPIGOLI DELLE VIE, GRIGLIE DELLE  
FINESTRE, SUPERFICI RIGATE  
DI GRAFFI. INTRICHI SOTTILI.  
MODERNITÀ  
E INTELLIGENZA COLLETTIVA.

*TRANSLUCENT ALABASTER  
DOORS, WELCOMING SUNLIGHT.  
MARBLE COLUMNS, FIERCELY  
SUPPORTING PEDIMENTS.  
HEAPS OF FLICKERING PLATE.  
BLACK CIRCUITS. BLANK WALLS  
TREASURING LOVE MESSAGES.  
CONCRETE. ANGLED TURNS,  
WINDOW IRONWORKS, SCRATCHED  
CRUSTS. SUBTLE MAZES.  
MODERNITY AND COLLECTIVE  
INTELLIGENCE.*

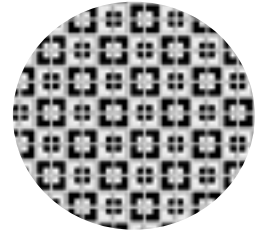


### Urban grid

**dimension:**  
288 X 288 mm  
**decor:**  
pearl  
**suggested grout:**  
dark grey



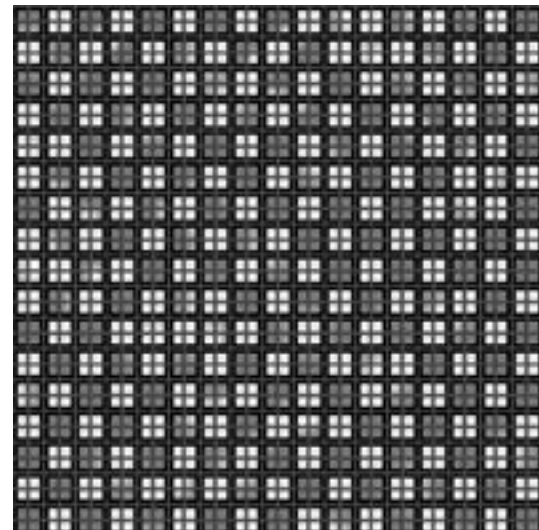
optional color grout



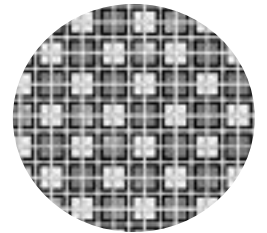
light grey

### Metropolis

**dimension:**  
288 X 288 mm  
**decor:**  
warm silver  
pearl  
**suggested grout:**  
dark grey



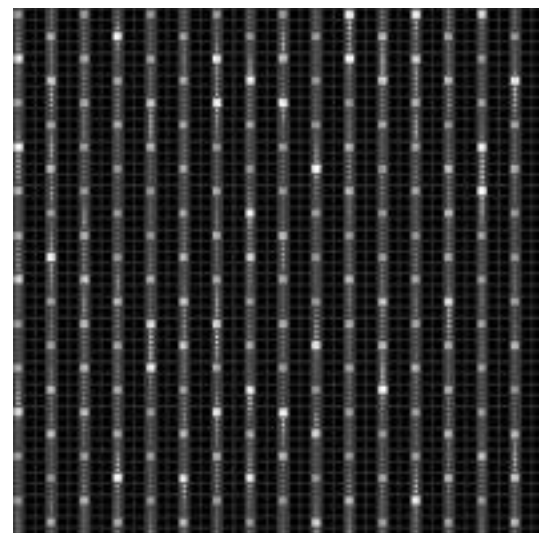
optional color grout



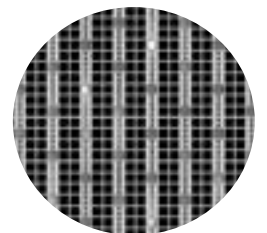
light grey

### Railways

**dimension:**  
288 X 288 mm  
**decor:**  
warm silver  
pearl  
**suggested grout:**  
dark grey

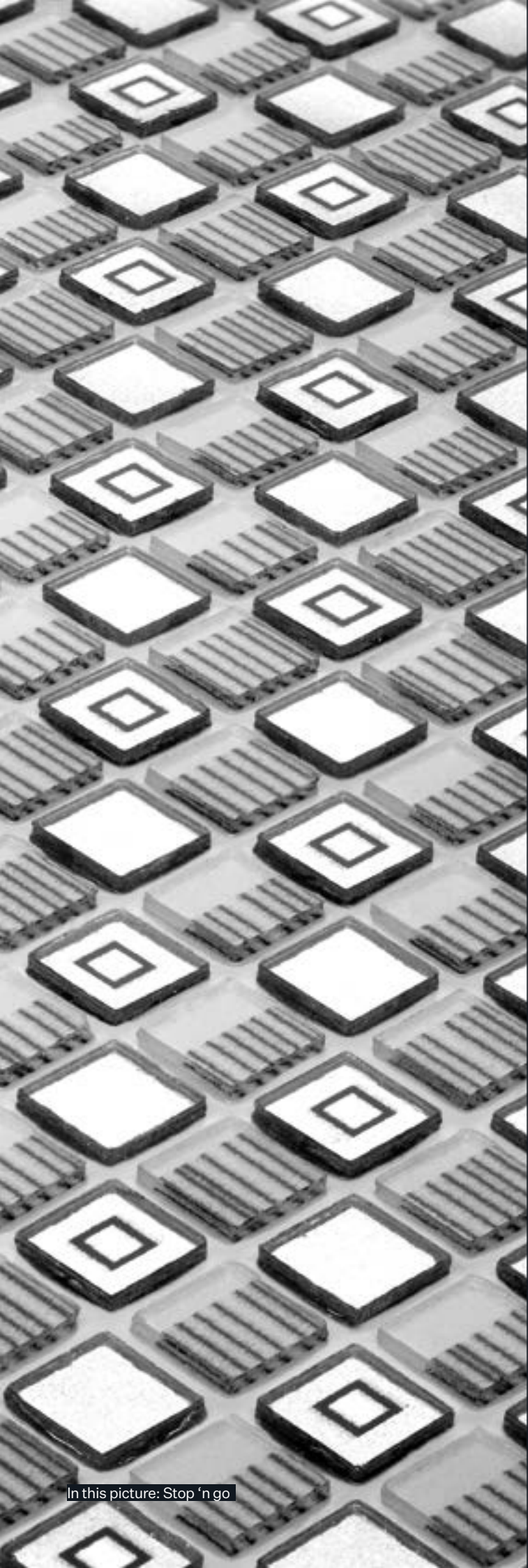


optional color grout



light grey

Spessore tessera disponibile solo in 1 mm  
Available only 1 mm tesserae thickness

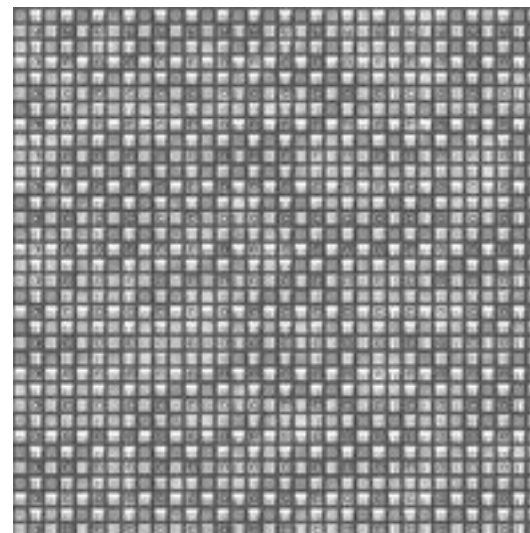


### Stop 'n go

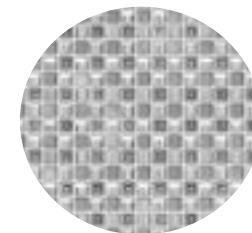
**dimension:**  
288 X 288 mm  
**decor:**  
warm silver  
pearl  
**suggested grout:**  
grey

### Silver concrete

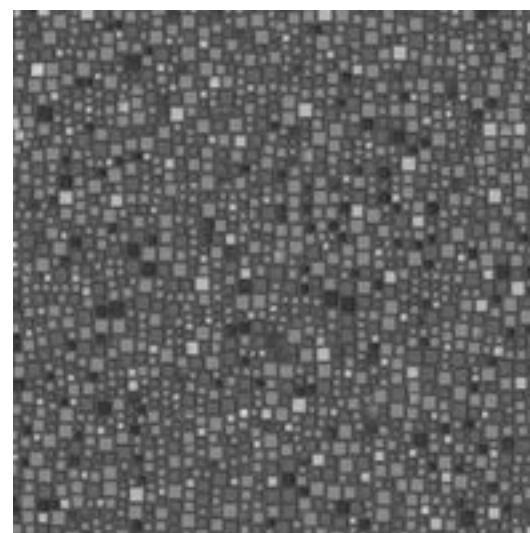
**dimension:**  
288 X 288 mm  
**decor:**  
warm silver  
pearl  
**suggested grout:**  
grey



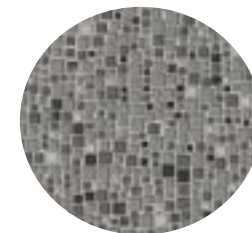
optional color grout



light grey



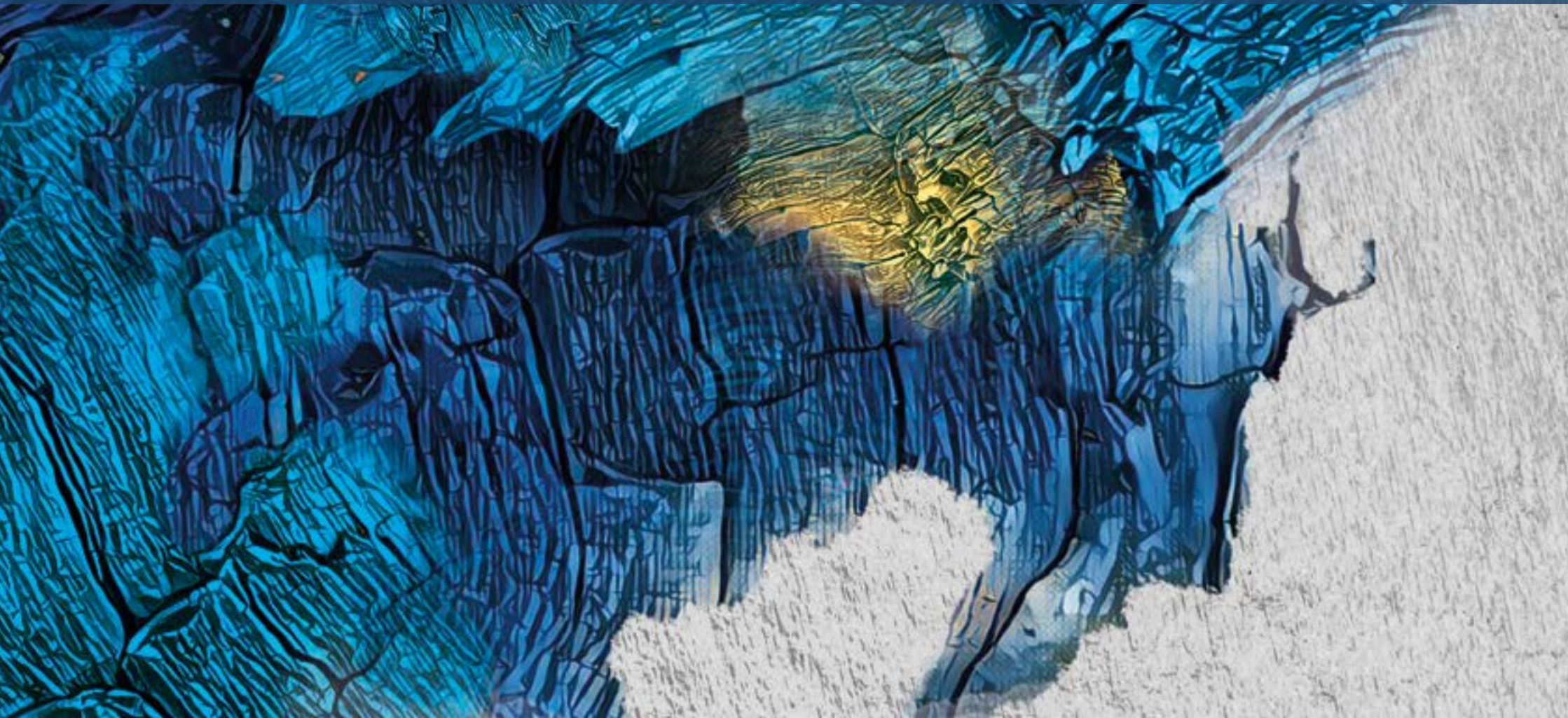
optional color grout

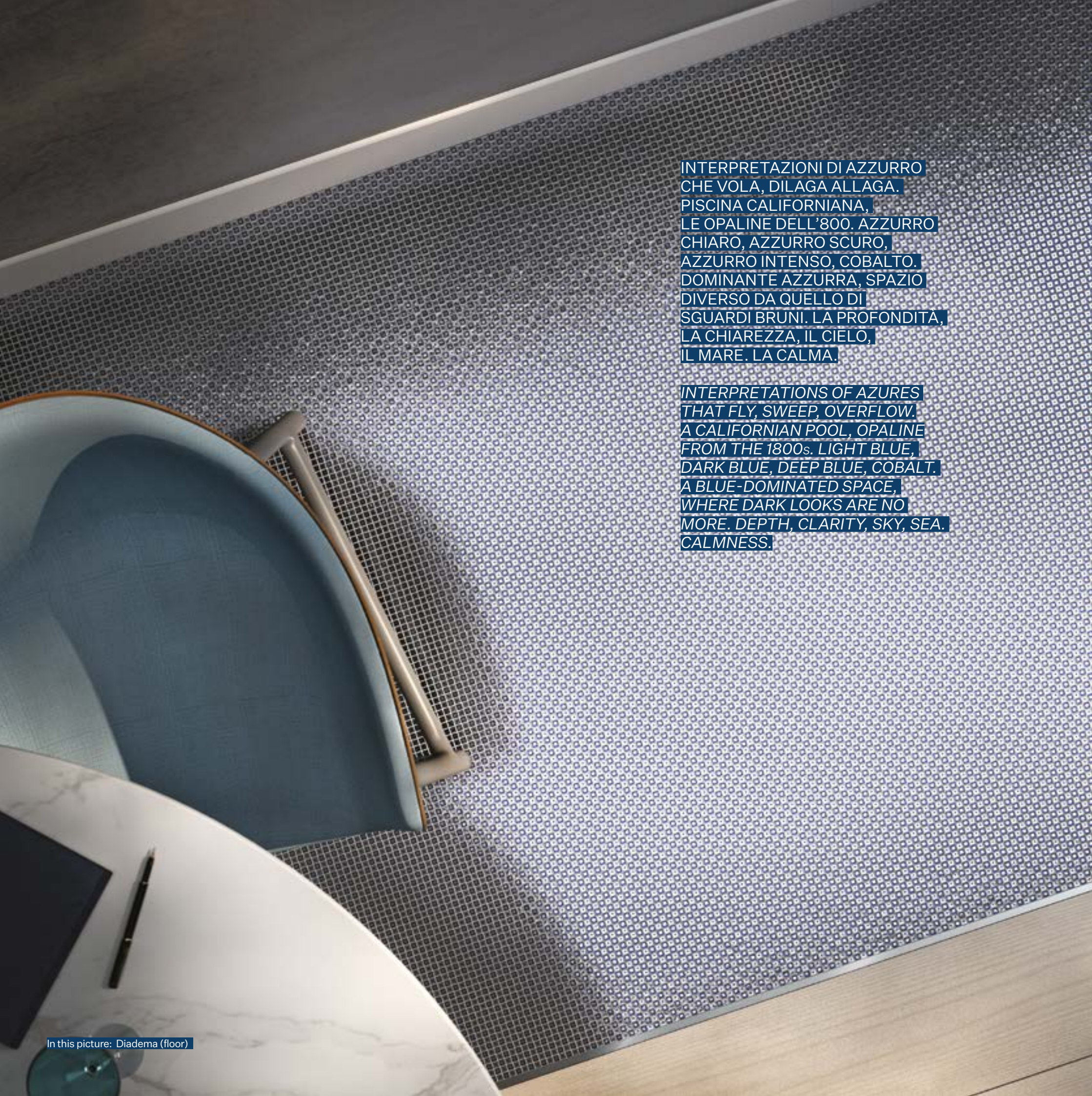


light grey



ocean mare  
ocean sea





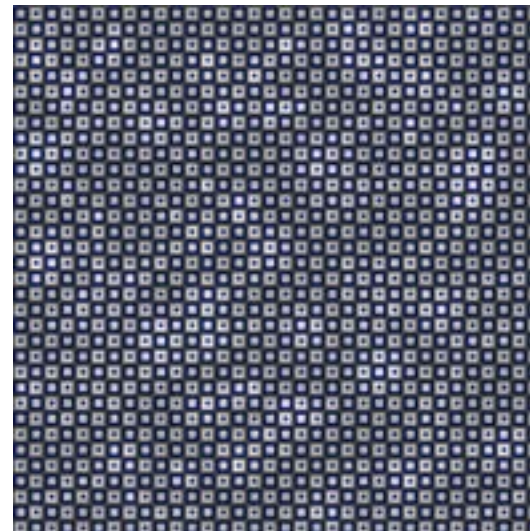
**INTERPRETAZIONI DI AZZURRO  
CHE VOLA, DILAGA ALLAGA.  
PISCINA CALIFORNIANA,  
LE OPALINE DELL'800. AZZURRO  
CHIARO, AZZURRO SCURO,  
AZZURRO INTENSO, COBALTO.  
DOMINANTE AZZURRA, SPAZIO  
DIVERSO DA QUELLO DI  
SGUARDI BRUNI. LA PROFONDITÀ,  
LA CHIAREZZA, IL CIELO,  
IL MARE. LA CALMA.**

**INTERPRETATIONS OF AZURES  
THAT FLY, SWEEP, OVERFLOW.  
A CALIFORNIAN POOL, OPALINE  
FROM THE 1800s. LIGHT BLUE,  
DARK BLUE, DEEP BLUE, COBALT.  
A BLUE-DOMINATED SPACE,  
WHERE DARK LOOKS ARE NO  
MORE. DEPTH, CLARITY, SKY, SEA.  
CALMNESS.**

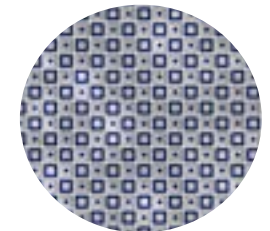


### Diadema

**dimension:**  
288 X 288 mm  
**decor:**  
warm silver  
**suggested grout:**  
dark grey



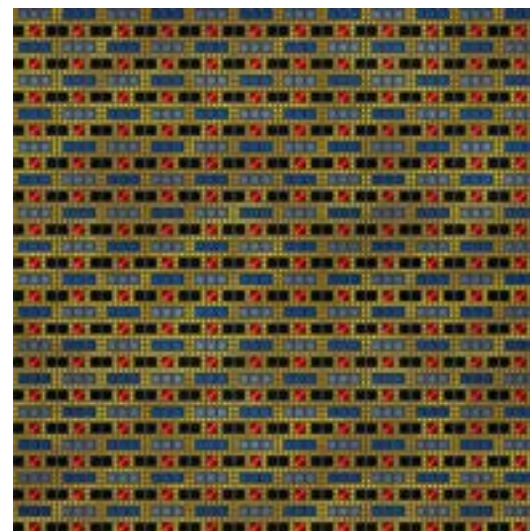
optional color grout



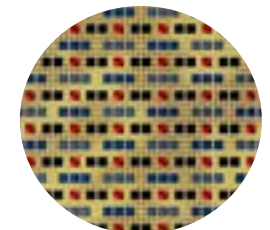
light grey

### Ruby blue

**dimension:**  
288 X 288 mm  
**decor:**  
warm gold  
pearl  
**suggested grout:**  
dark grey



optional color grout

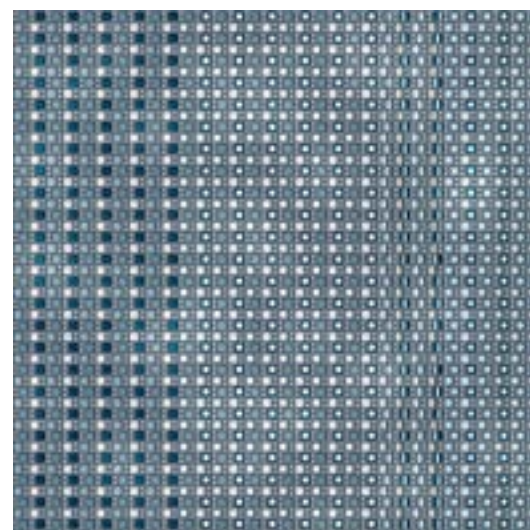


light beige

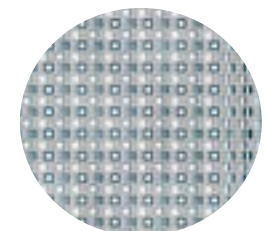
Spessore tessera disponibile solo in 1 mm  
Available only 1 mm tesserae thickness

### Antartica

**dimension:**  
288 X 288 mm  
**decor:**  
warm silver  
**suggested grout:**  
avio tone



optional color grout



light grey

Spessore tessera disponibile solo in 1 mm  
Available only 1 mm tesserae thickness

In this picture: Antartica



### Shells

**dimension:**  
288 X 288 mm  
**decor:**  
warm silver  
pearl  
**suggested grout:**  
avio tone

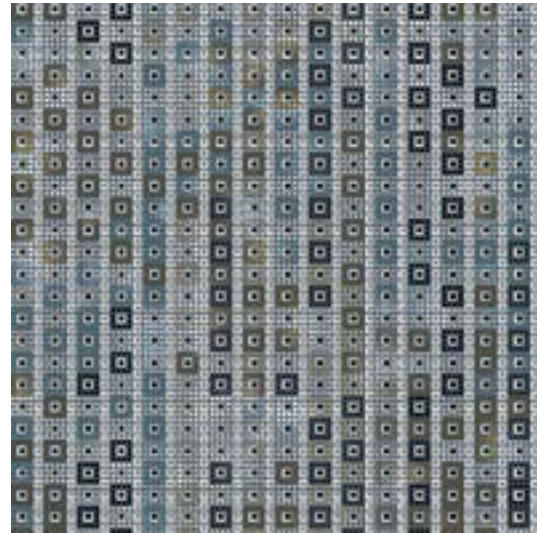
### Ocean rain

**dimension:**  
288 X 288 mm  
**decor:**  
warm silver  
pearl  
**suggested grout:**  
dark grey

### Reef rain

**dimension:**  
288 X 288 mm  
**decor:**  
warm gold  
pearl  
**suggested grout:**  
dark grey

In this picture: Ocean rain

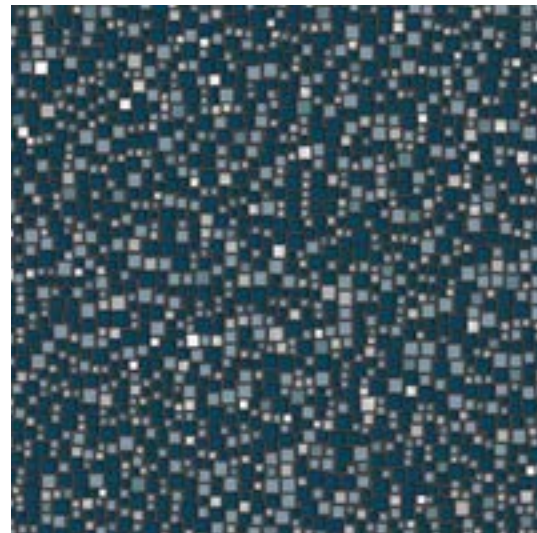


optional color grout

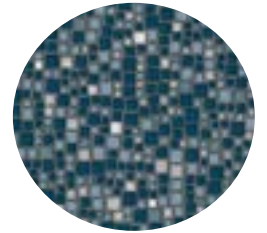


light grey

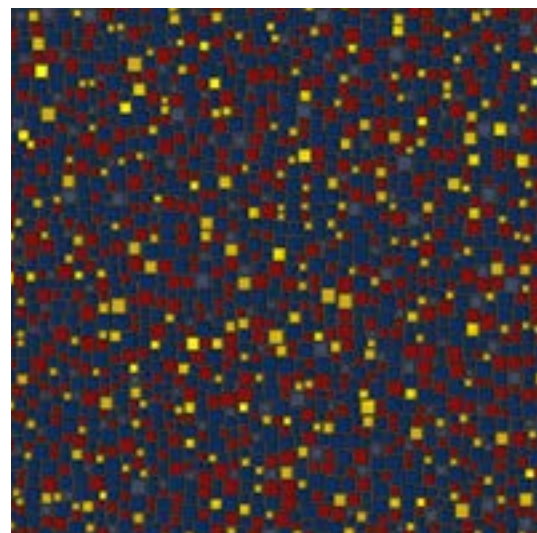
Spessore tessera disponibile solo in 1 mm  
Available only 1 mm tesserae thickness



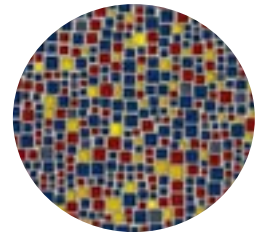
optional color grout



avio tone



optional color grout




light grey



lolita

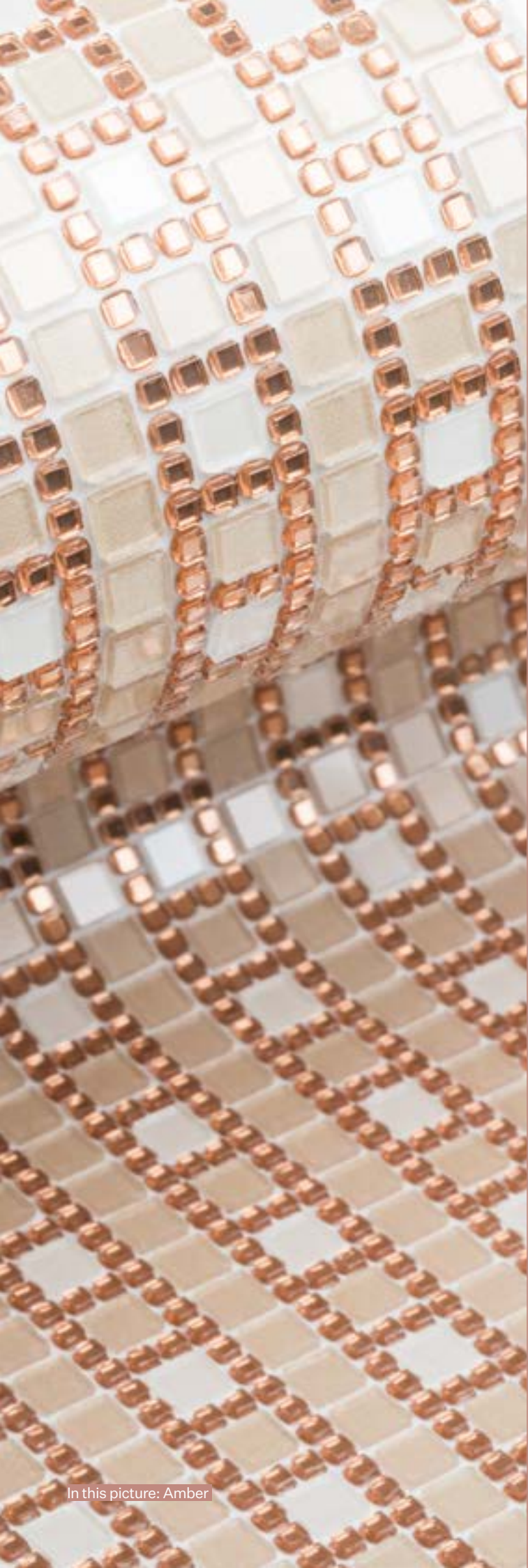




IL CALORE, IL TEPORE, I CONFETTI.  
LE COSE ANTICHE, SENZA ESSERE  
VECCHIE, I PIZZI, I TRAMONTI. MA  
ANCHE PROFUMO DI TERRA E DI  
NOCCIOLE, CODE DI CASTORO.  
SGUARDO CHE NON HA  
CONOSCIUTO IL MARE. LA CIPRIA.  
FARE LA PACE, GENTILEZZA,  
DELICATEZZA.

WARMTH, COSINESS, DRAGÉES.  
ANTIQUES THAT DIDN'T AGE,  
LACES. SUNSETS. AND THE SMELL  
OF EARTH AND HAZELNUTS,  
BEAVER TAILS. A GLANCE THAT  
NEVER MET THE SEA. POWDER.  
RECONCILIATION, KINDNESS,  
CONSIDERATION.





### Amber

**dimension:**  
288 X 288 mm  
**decor:**  
warm rose gold  
pearl  
**suggested grout:**  
grey

### Camel dune

**dimension:**  
288 X 288 mm  
**decor:**  
warm gold  
pearl  
**suggested grout:**  
sand tone

### Dandelion

**dimension:**  
288 X 288 mm  
**decor:**  
warm silver  
pearl  
**suggested grout:**  
grey

In this picture: Amber

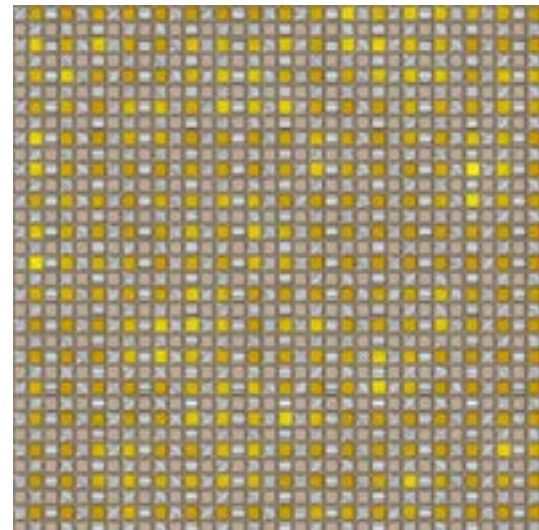


optional color grout

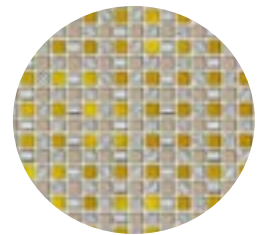


light grey

Spessore tessera disponibile solo in 1 mm  
Available only 1 mm tesserae thickness



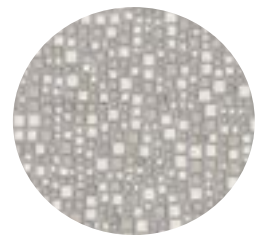
optional color grout



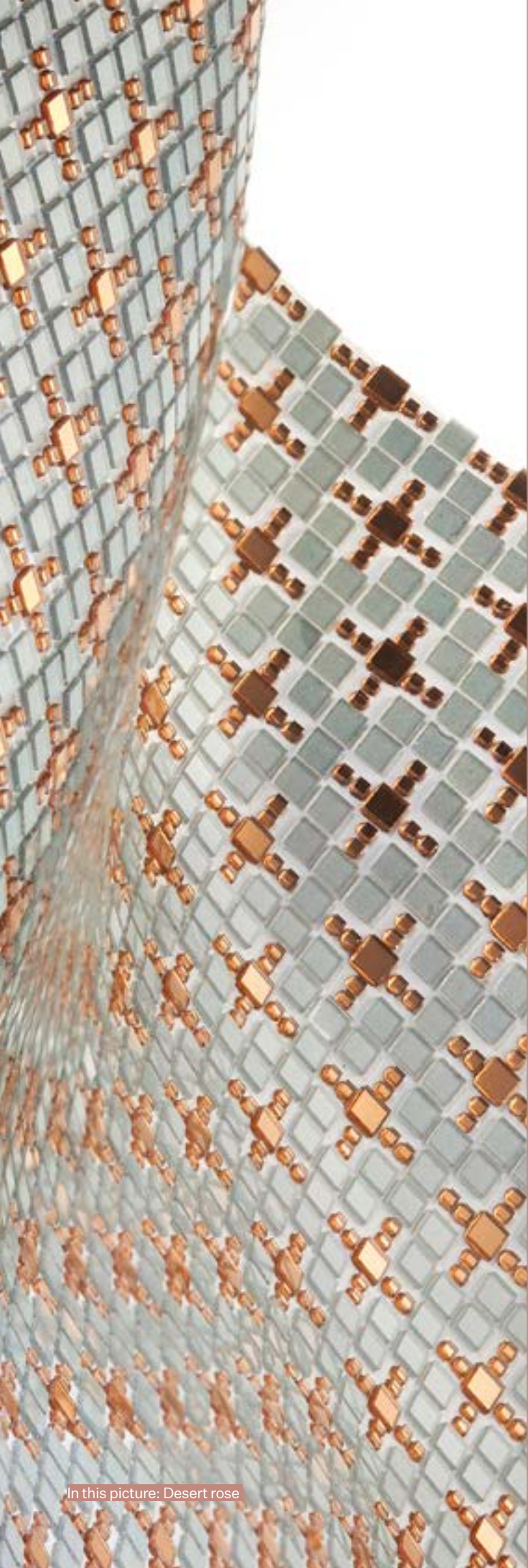
light beige



optional color grout



light grey

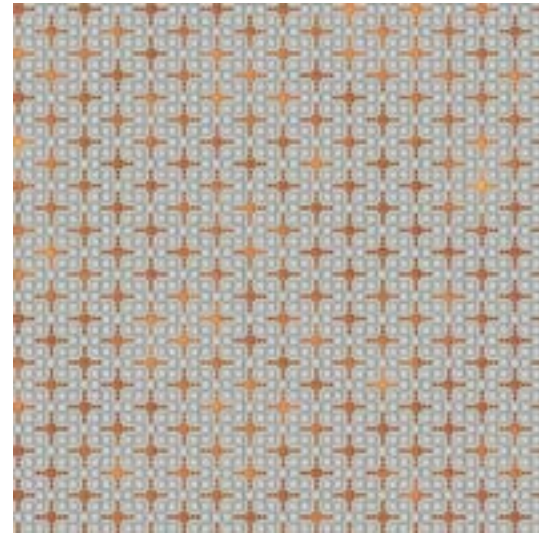


### Desert rose

**dimension:**  
288 X 288 mm  
**decor:**  
warm rose gold  
pearl  
**suggested grout:**  
grey

### Bronze sunset

**dimension:**  
288 X 288 mm  
**decor:**  
warm rose gold  
**suggested grout:**  
mud tone



optional color grout

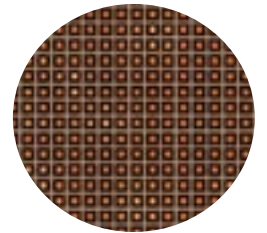


light grey

Spessore tessera disponibile solo in 1 mm  
Available only 1 mm tesserae thickness



optional color grout



sand tone

In this picture: Desert rose



### Rose velvet

**dimension:**  
288 X 288 mm

**decor:**  
warm gold  
pearl

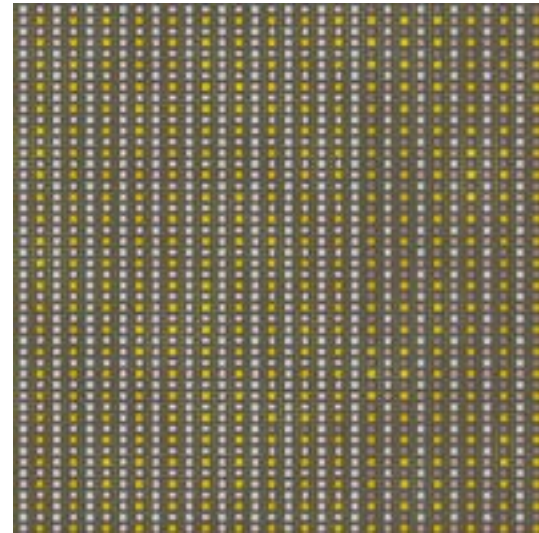
**suggested grout:**  
dark grey

### Gentle rain

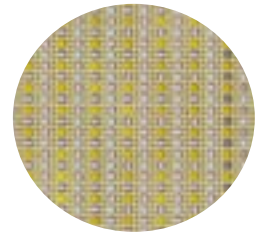
**dimension:**  
288 X 288 mm

**decor:**  
warm gold  
pearl

**suggested grout:**  
dark grey

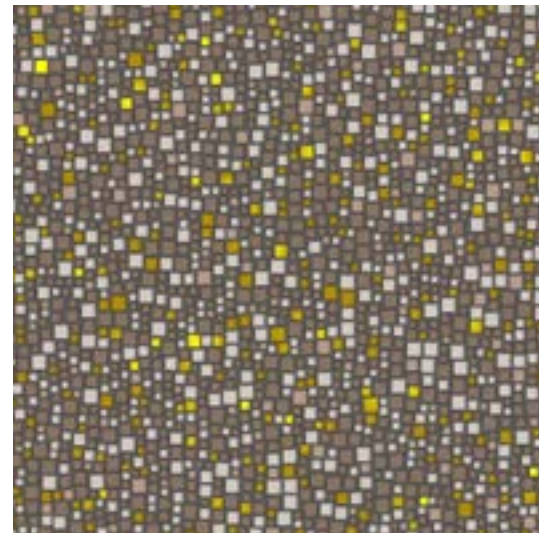


**optional color grout**

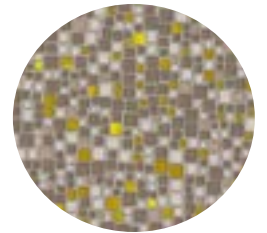


beige tone

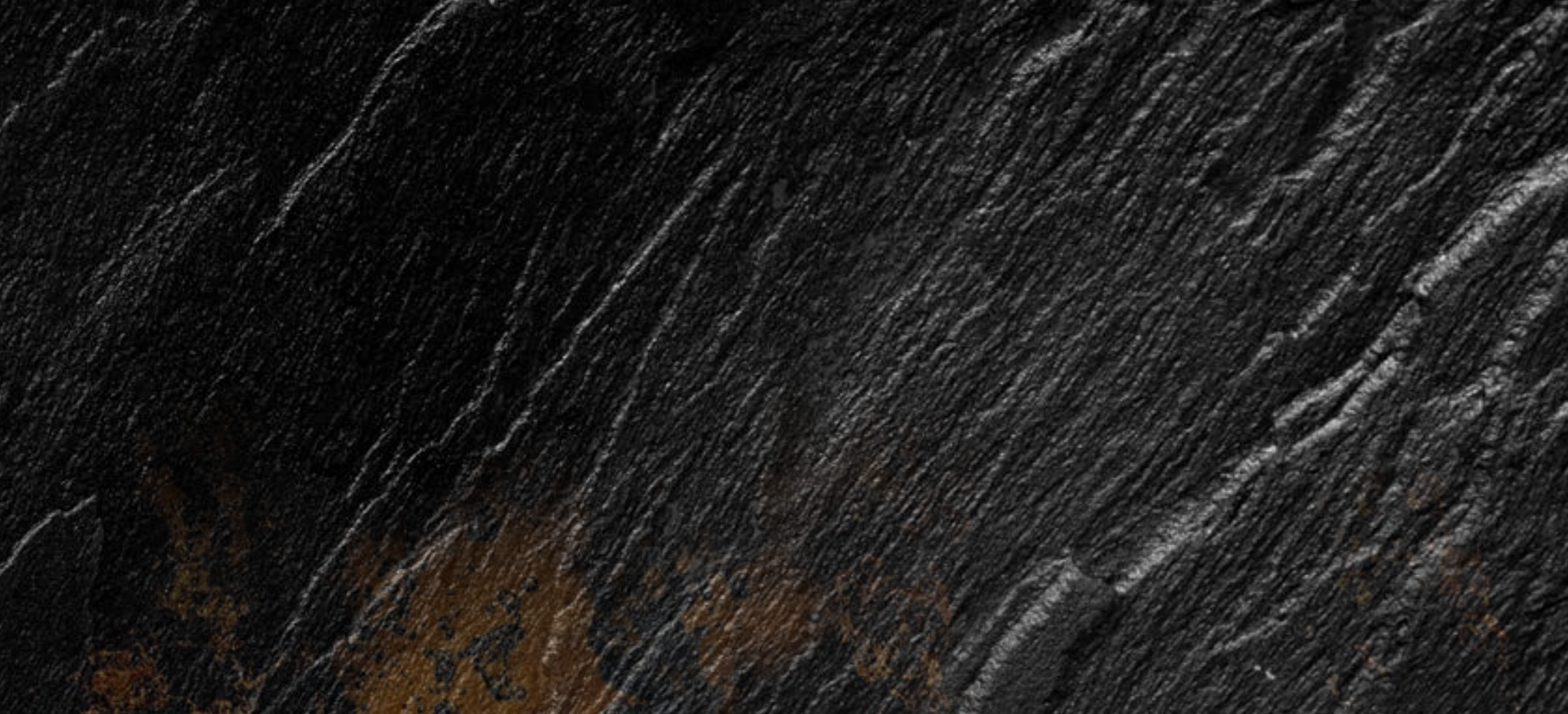
Spessore tessera disponibile solo in 1 mm  
Available only 1 mm tesserae thickness



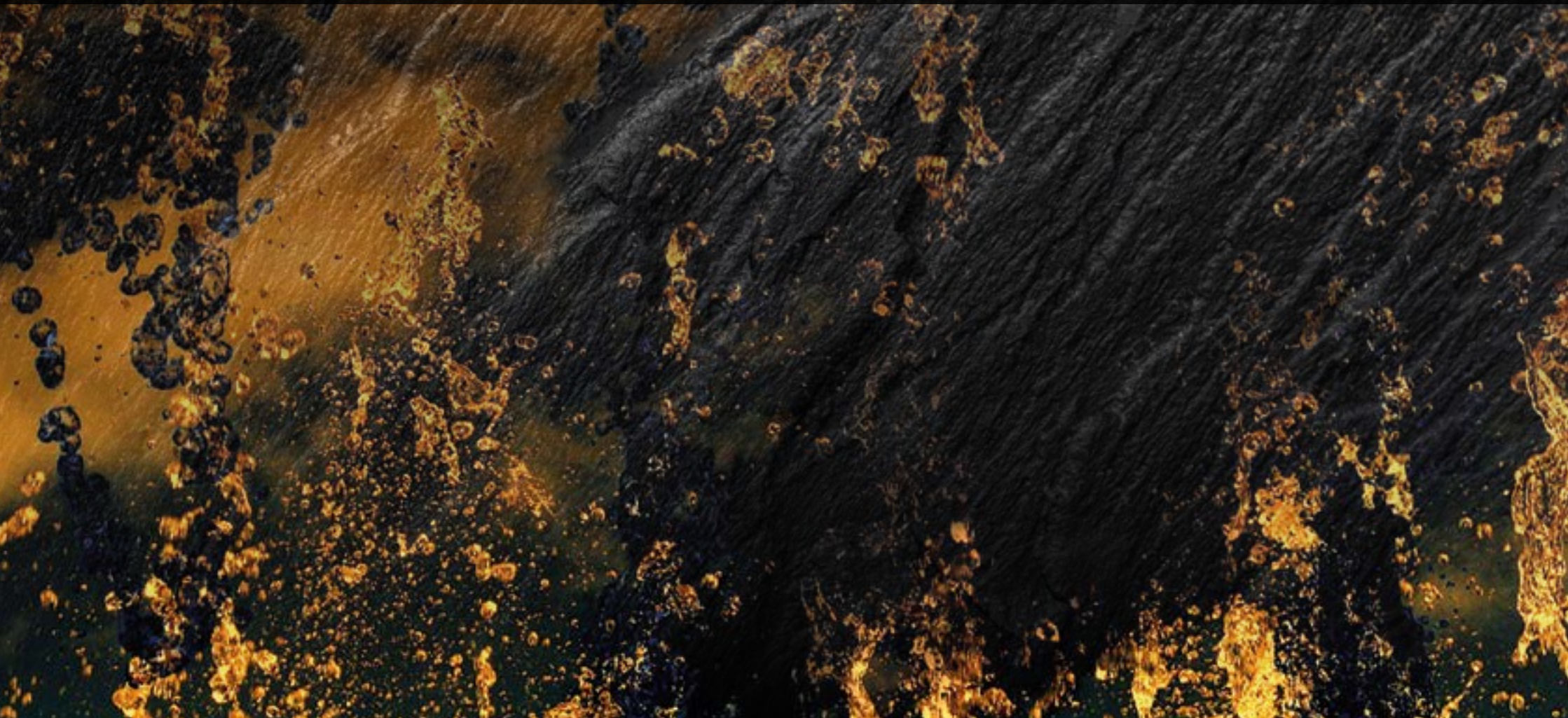
**optional color grout**



light grey



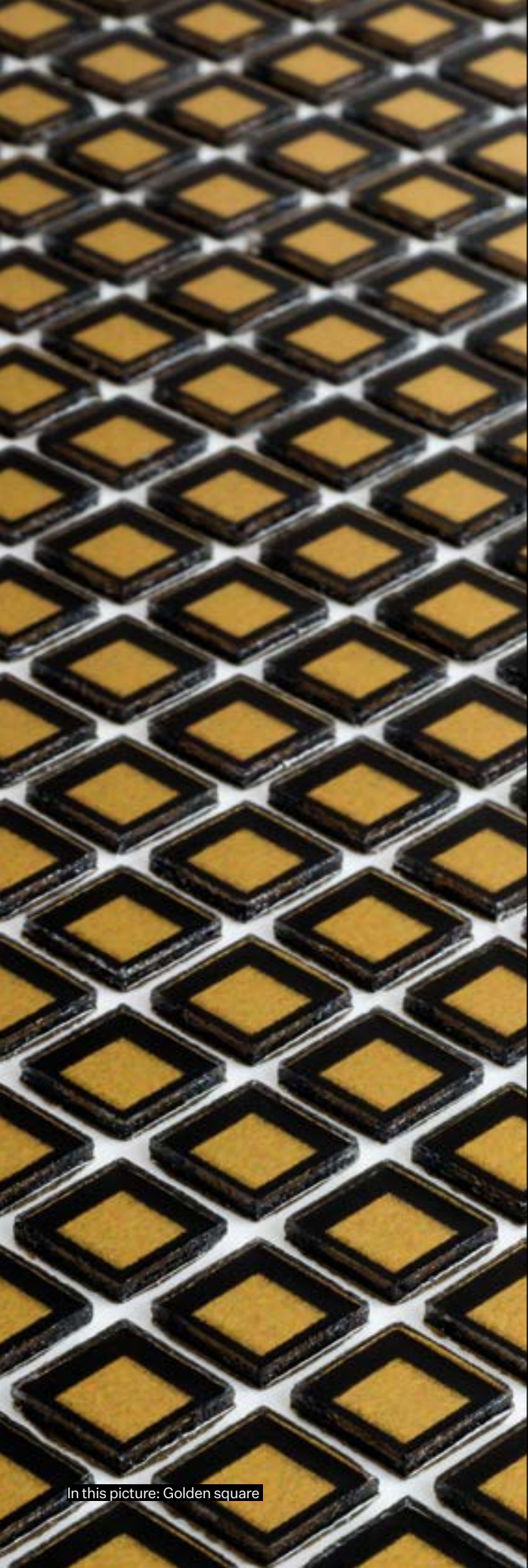
sotto il vulcano  
under the volcano





**CAVIALE, RIBES, GRAFITE,  
CATRAME, NOTTE. NERO CHE  
SI INCENDIA QUANTO L'ORO.  
VIBRAZIONI LUSUOSE. NERO  
DEFINITIVAMENTE SENSUALE.  
MONDO DI FIABA DOVE TUTTO È  
POSSIBILE, MA ANCHE IL NERO E  
L'ORO DI ALBERTO BURRI, PITTORE  
DELLA MATERIA. ARISTOCRAZIA,  
FORZA.**

**CAVIAR, BLACKCURRANT,  
GRAPHITE, TAR, NIGHT. BLACK,  
FIRING UP LIKE GOLD. SUMPTUOUS  
VIBRATIONS. BLACK, DECISIVELY  
SEDUCTIVE. A FAIRYTALE WORLD  
WHERE ANYTHING COULD HAPPEN  
- AND THE BLACK AND GOLD OF  
ALBERTO BURRI, THE PAINTER  
OF MATERIALITY. ARISTOCRACY,  
STRENGTH.**



### Golden square

**dimension:**  
288 X 288 mm  
**decor:**  
warm gold  
**suggested grout:**  
dark grey

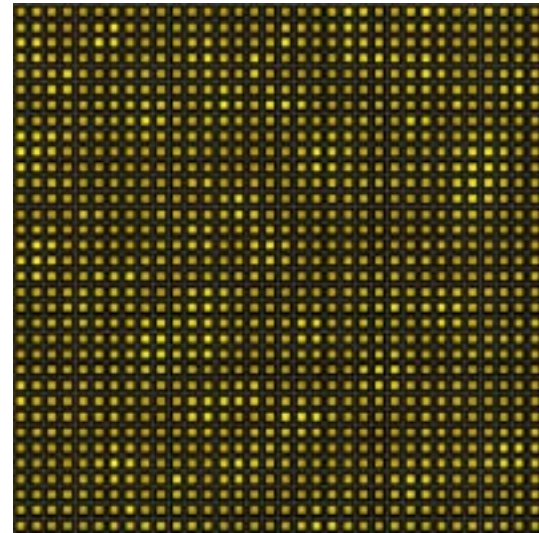
### Just a pattern

**dimension:**  
288 X 288 mm  
**decor:**  
pearl  
**suggested grout:**  
black

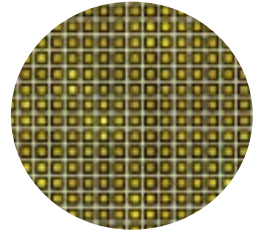
### Carbonfiber

**dimension:**  
288 X 288 mm  
**decor:**  
pearl  
**suggested grout:**  
black

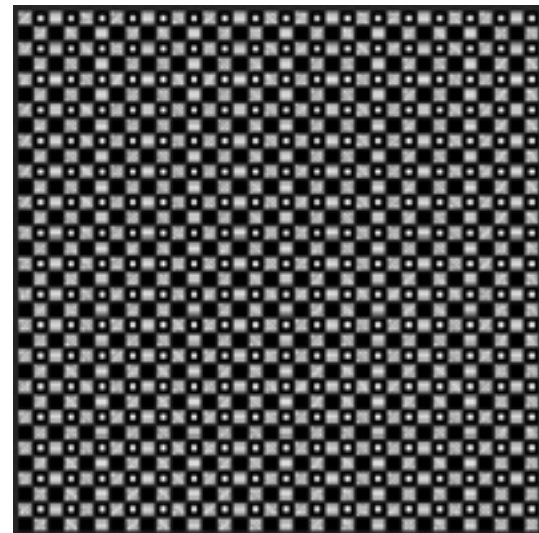
In this picture: Golden square



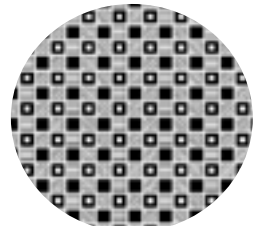
optional color grout



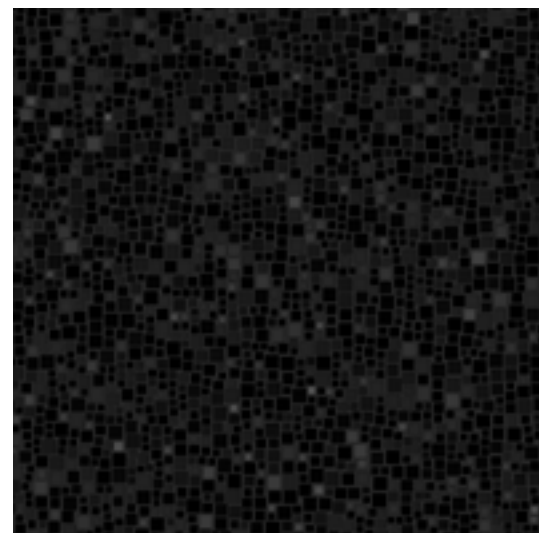
light beige



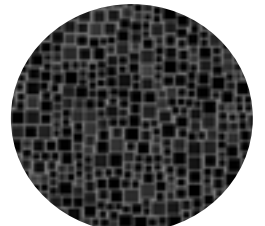
optional color grout



white tone



optional color grout



dark grey



**Gold chain**

**dimension:**  
288 X 288 mm

**decor:**  
warm gold  
pearl

**suggested grout:**  
dark grey tone

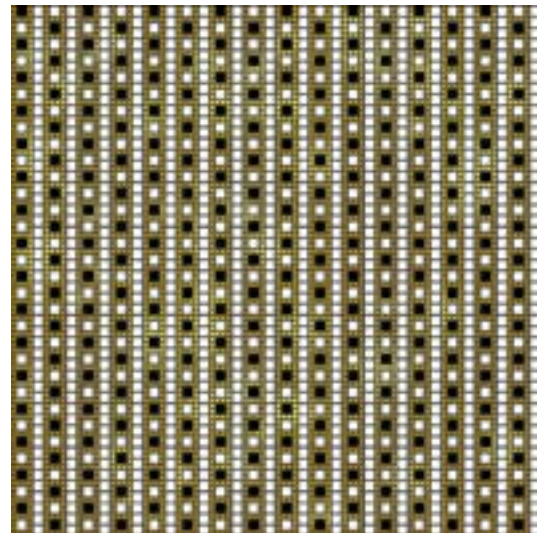
**Roma**

**dimension:**  
288 X 288 mm

**decor:**  
warm gold  
pearl

**suggested grout:**  
sand tone

In this picture: Gold chain



**optional color grout**

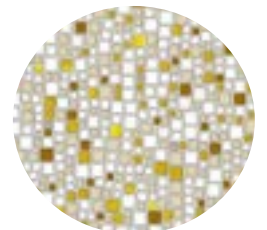


light grey

Spessore tessera disponibile solo in 1 mm  
Available only 1 mm tesserae thickness



**optional color grout**



light grey

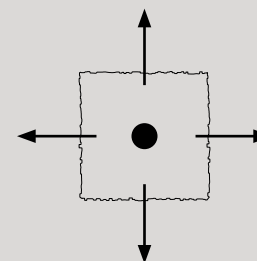
In this picture: Carbonfiber

## Formati

*Formats*

### Dimensioni del modulo standard

*Standard module height*

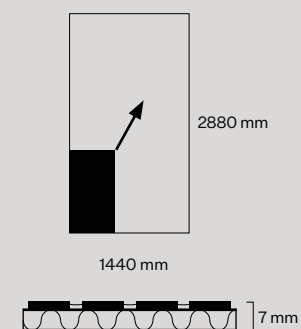


288 x 288 mm

**Design composti da moduli 288 x 288 mm con incastro univoco "maschio - femmina".**  
*Interlocking design modules with puzzle-like joints.*

### Premontaggio

*Premounted panels*



**Premontabile su pannello in alveolare d'alluminio dimensioni max: 1440 x 2880 mm - tot. sp. 7 mm.**  
*Premounted option available on composite alu panel, dimensions up to: 1440 x 2880 mm - tot. thickness 7 mm.*



### Voce di capitolato

Design in picotessere quadrate TILLA® di vetro extrachiaro da 2 a 7 mm per lato, decorate con nanostrati di pigmenti colorati e metalli, premontate su basi flessibili in resina polimerica ad incastro univoco.

Spessore TILLA®:

1 mm (applicazioni a parete)

2 mm (applicazioni a pavimento)

Caratteristiche estetiche:

brillante / superficie tattile / percezione vitrea

Bordi:

decisi, non taglienti.

### Technical description

Designs made of extra clear glass squared picotesserae TILLA® with a 2 up to 7 mm side, decorated with colored and metallic nanolayers and applied on polymeric interlocking flexible base supports.

TILLA® thickness:

1 mm (wall applications)

2 mm (floor applications)

Touch and feel:

shiny / embossed surface / vitreous

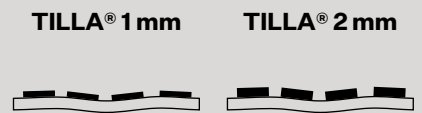
Material's edges:

defined, not sharp.

scale 1:1

## Dati tecnici

Technical data



	TILLA® 1 mm	TILLA® 2 mm
<b>spessore totale (mm)</b> total thickness (mm)	2,2	3,2
<b>Kg/Mq (approx)</b> Kgs/Sqm (approx)	3	6
<b>decoro a parete</b> wall decor	●	
<b>soffitti piani - volte a botte</b> flat ceilings - barrel vaults	●	
<b>SPA - docce - hammam</b> SPA - showers - hammam	●	
<b>pavimenti a basso traffico</b> low pedestrian traffic floors	∅	●
<b>pavimenti ad alto traffico</b> high pedestrian traffic floors	∅	∅
<b>vasche d'acqua</b> water basins		contattaci contact us
<b>n. moduli/Mq</b> modules/Sqm	~ 12	~ 12
<b>n. moduli/box</b> modules/box	25	17
<b>fuga tra moduli (mm)</b> joints between modules (mm)	< 0,1	< 0,1
<b>spessore collante (mm)</b> glue thickness (mm)	0,5	0,5
<b>tipologia collante</b> glue type	epossidico bicomponente epoxy bicomponent	
<b>tipologia stucco</b> grout type	epossidico bicomponente epoxy bicomponent	

# Informazioni tecniche

Technical info



## Prestazioni

I prodotti in collezione sono sviluppati per applicazioni decorative in interni o in ambienti esterni protetti dalle intemperie.

I moduli mutaforma consentono tempi di posa inferiori rispetto ai sistemi tradizionali grazie ai bordi tagliati a laser che garantiscono un incastro “maschio - femmina” prespaziato agevolando il lavoro di posa.

Lo spessore di pochi millimetri rende il materiale mutaforma idoneo per essere posato anche su superfici esistenti opportunamente rasate.

Il ridotto peso al mq garantisce vantaggi nel trasporto ed evita lo scivolamento del materiale nella posa in verticale.

## Material performances

*These products are suitable for decorative interior applications and sheltered exterior uses.*

*Mutaforma's hypertechnological support modules guarantee optimized laying time thanks to the puzzle-like joints technology that permits to ease the installers.*

*Being only a few millimeters thick, mutaforma's material can be laid directly on existing levelled surfaces.*

*The limited weight per square meter grants advantages in transportation and handling costs and avoids vertical slip while laying.*



## Per una posa a regola d'arte

1. Controllare che il sottofondo sia perfettamente liscio, coeso, maturato e privo di asperità. Il materiale mutaforma è copiativo al pari di una carta da parati.

2. Stendere il giusto spessore di collante tramite l'apposita spatola dentata fornita in dotazione. Controllare lo spessore del collante.

3. Consultare le mappe di posizionamento e il manuale di posa contenuti nella confezione. Video: [vimeo.com/mutaforma/laying](https://vimeo.com/mutaforma/laying)

Le operazioni di taglio devono essere effettuate con disco diamantato o waterjet.

## The perfect laying

1. *The substrate must be perfectly smooth, cohesive and well dried. Avoid bumps and dips: mutaforma's material behaves like a decorative wallpaper.*

2. *Spread the right quantity of glue using the specific spatula. Mutaforma's material requires only a thin layer of glue.*

3. *Follow the enclosed manuals and data sheets. Watch the video: [vimeo.com/mutaforma/laying](https://vimeo.com/mutaforma/laying)*

*Cuts can be made with diamond disc or waterjet.*



## Illuminazione ottimale

La brillantezza del materiale viene esaltata da sorgenti luminose frontali quali: finestre, spot e luci diffuse. Si sconsiglia l'uso di luci radenti.

## Lighting tips

*Material brightness is enhanced by frontal lighting sources such as: windows, diffused lights, focused spotlight. Avoid grazing lights.*



## Scivolosità in ambienti umidi

Classe di resistenza: R 10 (DIN 51130:2004)

## Slipperiness in humid environments

Resistance class: R 10 (DIN 51130:2004)



## Pulizia ordinaria

Utilizzare un panno pulito imbevuto di un comune detergente domestico per vetro o una miscela di acqua calda e alcol. Detergenti e panni abrasivi potrebbero opacizzare il vetro. Non utilizzare sostanze acide o corrosive.

## Daily cleaning

*Use a soft cloth imbued with a domestic glass-cleaner or a mixture of hot water and alcohol. Abrasive products may matt glass. Do not use acid or corrosive detergents.*

**mutaforma**

a brand of DG Mosaic s.r.l.  
via Einstein, 86  
20010 Marcallo - Milano, Italy  
**t**+39 0297254101  
**f**+39 029753098  
info@mutaforma.com  
www.mutaforma.com



#mutaforma  
#augmentedmaterials  
#tilla

Printed in Italy  
07-2019

**I colori riprodotti nel presente catalogo possono differire dai colori dei prodotti reali. L'azienda migliora costantemente la qualità della propria produzione e si riserva il diritto di modificare in qualsiasi momento le caratteristiche dei prodotti presenti in questo catalogo. Questo catalogo è fornito gratuitamente ed è proprietà di Mutaforma e non può essere oggetto di vendita. Vietata la riproduzione anche parziale. TILLA® e mutaforma sono marchi registrati di proprietà di DG Mosaic s.r.l. - All Rights Reserved. 2017.**

*Please note that product's colours may differ from their printed representations.*

*Mutaforma is constantly improving the quality of its products and reserves the right to change the characteristics of products included in this catalogue at any time. Copy forbidden.*

*This catalogue is distributed free of charge. It may not be sold, and it remains property of Mutaforma.*

*TILLA® and mutaforma are registered trademarks property of DG Mosaic s.r.l.*

*All Rights Reserved. 2017.*

muta*forma*