

**N**



**nuances**



**C**

**a mutaforma collection**



**S**



**Mutaforma**  
**è il brand italiano che**  
**lavora nell'ambito dei**  
**materiali aumentati**  
**a partire dal vetro**  
**grazie all'impiego di**  
**nanotecnologie.**  
**Particelle di dimensioni**  
**nanometriche, con**  
**specifiche proprietà**  
**chimico-fisiche, vengono**  
**depositate su matrici di**  
**vetro cambiandone le**  
**caratteristiche ottiche e**  
**la valenza estetica.**  
**Un nuovo materiale**  
**stratificato, composito,**  
**intelligente con una**  
**vocazione naturale**  
**ad innestarsi in altri**  
**materiali aumentando**  
**le opportunità**  
**d'interazione ed**  
**esperienza:**  
**augmented materials.**

*Mutaforma*  
*is the Italian brand that operates in the field of*  
*augmented materials through the application of*  
*nanotechnology.*  
*Nanometric particles with specific physical and*  
*chemical features, sublimed on the vitreous*  
*surface at molecular level, change the optical*  
*properties of glass and its aesthetic significance.*  
*A new stratified, composite and smart material*  
*with a natural tendency to merge and graft*  
*with other materials to augment experience*  
*and interaction options: augmented materials.*

# Manifesto

**I materiali della nostra vita rappresentano qualcosa di più della loro funzione pratica. Sono la nostra seconda pelle.**

**Custodiscono la memoria, sono sempre intorno a noi. Danno forma alle nostre esperienze e sono l'involucro delle nostre emozioni. Costituiscono un incantevole miscuglio tra fascino e funzionalità. Raccontano la nostra storia.**

**Con l'interesse e l'obiettivo di nutrire queste connessioni, proponiamo e orgogliosamente produciamo in Italia un materiale ad alta tecnologia caratterizzato da proprietà fisiche, accostamenti produttivi e creativi inediti.**

**Il nostro sguardo è irrequieto, scandagliante e ardito: cerca continuamente di distillare estratti per un nuovo Rinascimento della materia nel primo quarto di Luna del 21° secolo.**

*Materials in our life mean more than their practical function, they are our second skin.*

*Materials trigger memories, surround us, shape our experiences and encase our emotions in an enchanting combination of fascination and functionality. Materials tell our story.*

*Committed to nurturing such connections, we proudly manufacture in Italy a high-tech material characterised by innovative, productive and creative features, taking special care of the sensory and emotional dimensions the material entails.*

*Our eye is restless, exploratory and dauntless: constantly on the lookout for the essence of a new Renaissance of materials in the first quarter Moon of the 21<sup>st</sup> century.*

# Nuances

**Nuances è la collezione di rivestimenti in vetro che racconta l'eleganza del materiale ipertecnologico mutaforma attraverso infinite note cromatiche. Nuances di colore impreziosite da nanodecor metallici come argento, oro e oro rosa, incontrano le coloratissime picotessere TILLA® trasformandosi in eleganti "pelli vitree" per pavimentazioni e rivestimenti parietali. Decorazioni contemporanee, ricche di dettagli e riflessi, che parlano con la voce più nobile che la luce possiede: il colore.**

*Nuances is the collection of glass coatings displaying the elegance of mutaforma hyper-tech material through limitless color shades. Nuances enriched by precious metallic nanodecors such as silver, gold and rose gold, meet the colorful TILLA® picotesserae turning into refined "glass skins" for walls and flooring applications. Contemporary decorations rich of details and reflections, embodying the most valuable story that the light can tell: "the story of color".*



# Indice

Index

<b>Opzioni di montaggio</b> <i>Mounting options</i>	10
<b>Posizionamento delle tessere</b> <i>Tesserae placement</i>	11
<b>Tenerife silver</b>	13
<b>Pamplona silver</b>	13
<b>Sevilla gold</b>	13
<b>Marrakech silver</b>	15
<b>Ibiza silver</b>	15
<b>Cipro pearl</b>	15
<b>Terracotta pearl</b>	17
<b>Terracotta rose gold</b>	17
<b>Etna rose gold</b>	17
<b>Elba rose gold</b>	19
<b>Grey rose gold</b>	19
<b>Peonia rose gold</b>	19
<b>Terracotta gold</b>	21
<b>Dark velvet gold</b>	21
<b>Kaki gold</b>	21
<b>Kaki pearl</b>	23
<b>Grey silver</b>	23
<b>Tortora silver</b>	23
<b>Tornado pearl</b>	25
<b>Tornado silver</b>	25
<b>Santorini silver</b>	25
<b>Velvet pearl</b>	27
<b>Cadet blu pearl</b>	27
<b>Cadet blu silver</b>	27
<b>Capri silver</b>	29
<b>Formati</b> <i>Formats</i>	32
<b>Opzioni</b> <i>Options</i>	33
<b>Voce di capitolato</b> <i>Technical description</i>	34
<b>Dati tecnici</b> <i>Technical data</i>	35
<b>Informazioni tecniche</b> <i>Technical info</i>	36

**1 Mq** di **Rain** contiene oltre 26.000 picotessere in vetro TILLA®  
**1 Sqm** of **Rain** contains more than 26.000 TILLA® picotesserae

## Nuances

25 color gradients / 50 matching tones

## Opzioni di montaggio

*Mounting options*



## Posizionamento delle tessere

*Tesserae placement*



**Rain**  
1 mq / 1sqm  
26.000 TILLA®



**Tilt**  
1 mq / 1sqm  
14.000 TILLA®



In this picture: Pamplona silver (premounted backlit panel)



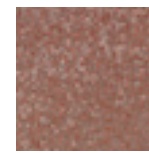
T1



T2

**Tenerife silver**

**decor:**  
warm silver  
pearl  
**suggested grout:**  
avio tone



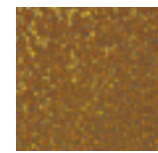
T1



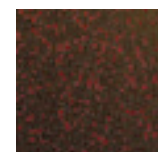
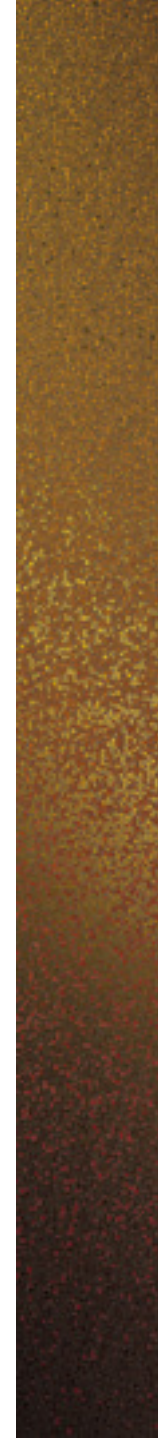
T2

**Pamplona silver**

**decor:**  
warm silver  
pearl  
**suggested grout:**  
light grey tone



T1



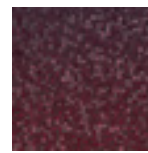
T2

**Sevilla gold**

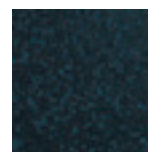
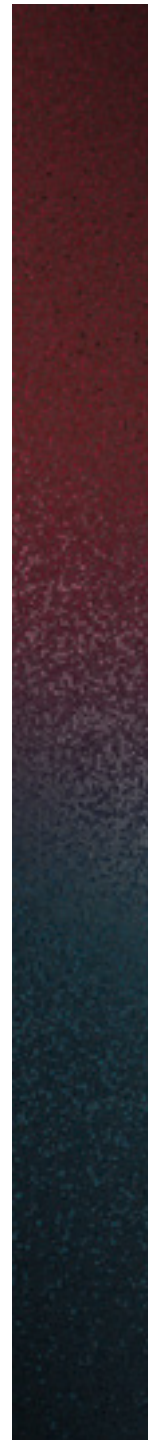
**decor:**  
warm gold  
pearl  
**suggested grout:**  
grey tone



In this picture: Cipro pearl (wall)



T1



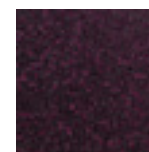
T2

**Marrakech silver**

**decor:**  
warm silver  
pearl  
**suggested grout:**  
dark grey tone



T1



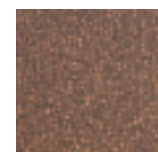
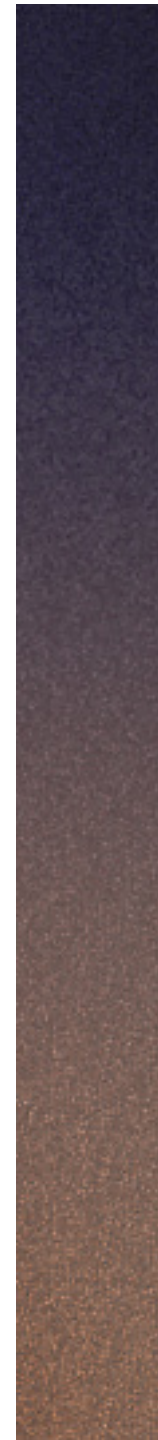
T2

**Ibiza silver**

**decor:**  
warm silver  
pearl  
**suggested grout:**  
dark grey tone



T1



T2

**Cipro pearl**

**decor:**  
pearl  
**suggested grout:**  
dark grey tone

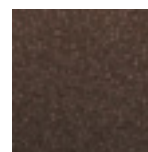
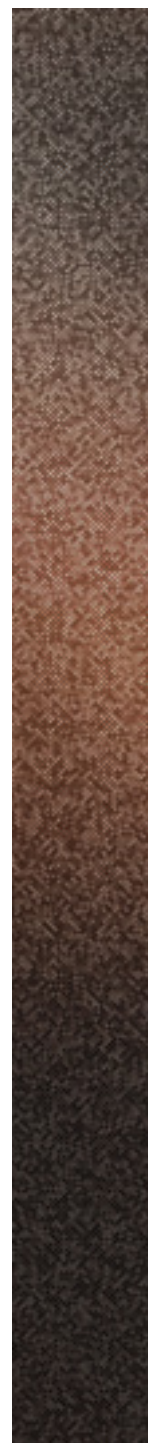




In this picture: Etna rose gold (wall)



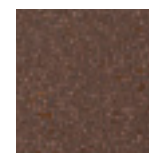
T1



T2

**Terracotta pearl**

**decor:**  
pearl  
**suggested grout:**  
mud tone



T1



T2

**Terracotta rose gold**

**decor:**  
rose gold  
pearl  
**suggested grout:**  
dark grey tone



T1



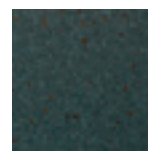
T2

**Etna rose gold**

**decor:**  
rose gold  
pearl  
**suggested grout:**  
dark grey tone



In this picture: Grey rose gold (wall)



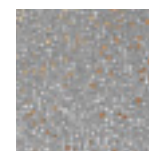
T1



T2

### Elba rose gold

**decor:**  
rose gold  
pearl  
**suggested grout:**  
dark grey tone



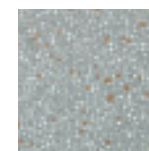
T1



T2

### Grey rose gold

**decor:**  
rose gold  
pearl  
**suggested grout:**  
grey tone



T1



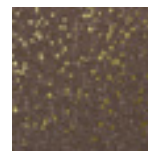
T2

### Peonia rose gold

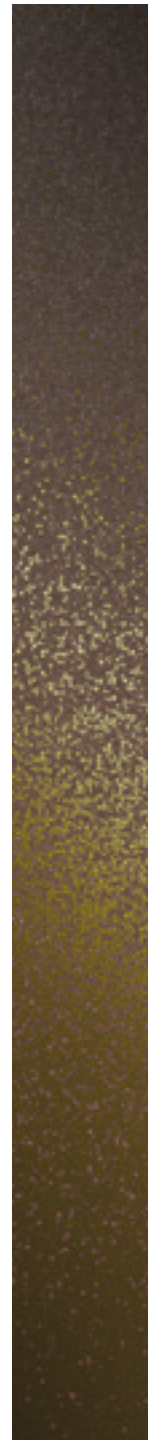
**decor:**  
rose gold  
pearl  
**suggested grout:**  
light grey tone



In this picture: Terracotta gold (wall)



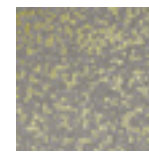
T1



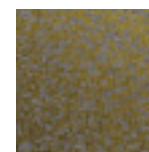
T2

**Terracotta gold**

**decor:**  
warm gold  
pearl  
**suggested grout:**  
chocolate tone



T1



T2

**Dark velvet gold**

**decor:**  
warm gold  
pearl  
**suggested grout:**  
grey tone



T1



T2

**Kaki gold**

**decor:**  
warm gold  
pearl  
**suggested grout:**  
light grey tone



In this picture: Grey silver (wall and backlit premounted panel)



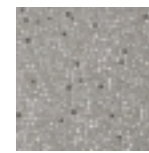
T1



T2

**Kaki pearl**

**decor:**  
pearl  
**suggested grout:**  
beige tone



T1



T2

**Grey silver**

**decor:**  
warm silver  
pearl  
**suggested grout:**  
light beige tone



T1



T2

**Tortora silver**

**decor:**  
warm silver  
pearl  
**suggested grout:**  
dark grey tone



In this picture: Tornado pearl and Tornado pearl T2 (large surfaces)



T1



T2

**Tornado pearl**

**decor:**  
pearl  
**suggested grout:**  
avio tone



T1



T2

**Tornado silver**

**decor:**  
warm silver  
pearl  
**suggested grout:**  
avio tone



T1



T2

**Santorini silver**

**decor:**  
warm silver  
pearl  
**suggested grout:**  
avio tone



In this picture: Cadet blu silver and Ibiza silver T2 (large surfaces)



T1



T2

**Velvet pearl**

**decor:**  
pearl  
**suggested grout:**  
light beige tone



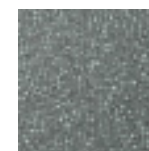
T1



T2

**Cadet blu pearl**

**decor:**  
pearl  
**suggested grout:**  
dark grey tone



T1



T2

**Cadet blu silver**

**decor:**  
warm silver  
pearl  
**suggested grout:**  
dark grey tone



In this picture: Capri silver (wall)



T1



T2

### Capri silver

**decor:**  
warm silver  
pearl

**suggested grout:**  
grey tone



In this picture: Tortora silver (wall)

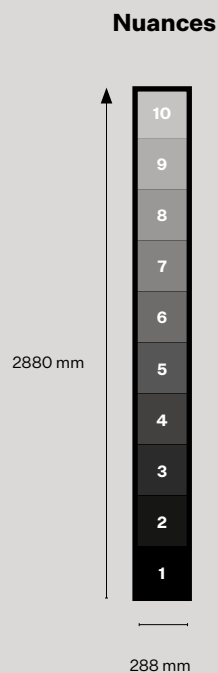


# Formati

Formats

## Dimensioni del modulo standard

Standard module height

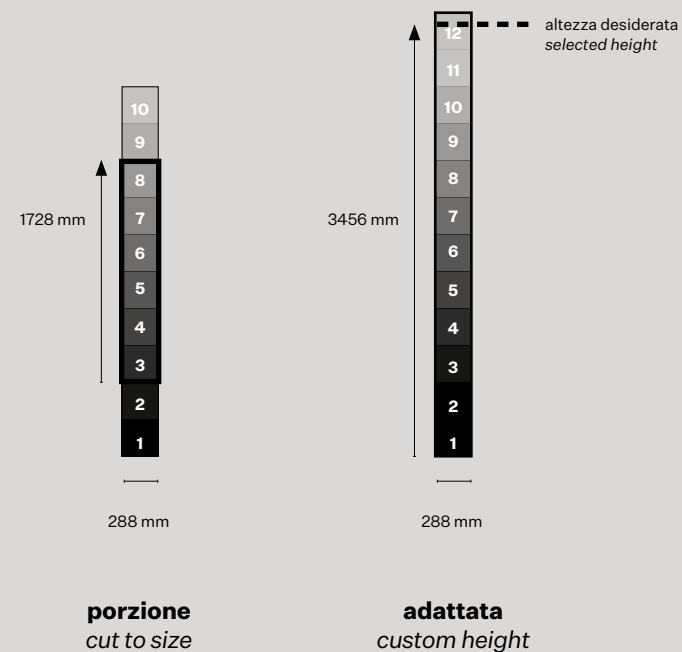


# Opzioni

Options

## Dimensioni personalizzate

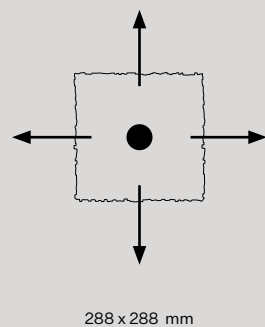
Custom size



**Strisce modulari 288 x 2880 mm ad incastro univoco "maschio-femmina".**  
**A richiesta: disponibili con due lati rettificati.**  
*Interlocking 288 x 2880 mm modular stripes with puzzle-like joints.*  
*Two rectified edges option available upon request.*

**Altezza personalizzabile sul multiplo del nostro modulo 288 mm.**  
*Custom height according to 288 mm module repetitions.*

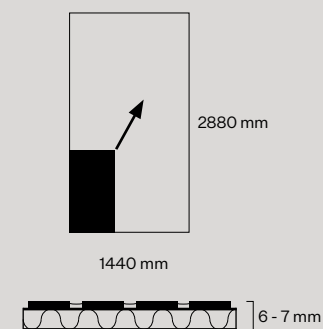
## Matching tones



**Design composti da moduli 288 x 288 mm con incastro univoco "maschio - femmina".**  
*Interlocking 288 x 288 mm design modules with puzzle-like joints.*

## Premontaggio

Premounted panels



**Premontabile su pannello in alveolare d'alluminio dimensioni max: 1440 x 2880 mm - tot. sp. 6-7 mm.**  
*Premounted option available on composite alu panel, dimensions up to: 1440 x 2880 mm - tot. thickness 6-7 mm.*

### Voce di capitolato

Design in picotessere quadrate TILLA® di vetro extrachiaro da 3.5 a 7 mm per lato, decorate con nanostrati di pigmenti colorati e metalli, premontate su basi flessibili in resina polimerica ad incastro univoco.

Spessore TILLA®:

1 mm (applicazioni a parete)

2 mm (applicazioni a pavimento)

Caratteristiche estetiche:

brillante / superficie tattile / percezione vitrea

Bordi:

decisi, non taglienti.

### Technical description

Designs made of extra clear glass squared picotesserae TILLA® with a 3.5 up to 7 mm side, decorated with colored and metallic nanolayers and applied on polymeric interlocking flexible base supports.

TILLA® thickness:

1 mm (wall applications)

2 mm (floor applications)

Touch and feel:

shiny / embossed surface / vitreous

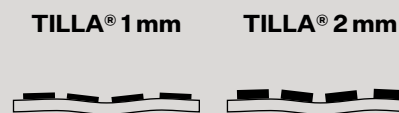
Material's edges:

defined, not sharp.

scale 1:1

## Dati tecnici

Technical data



	TILLA® 1 mm	TILLA® 2 mm
<b>spessore totale (mm)</b> total thickness (mm)	2,2	3,2
<b>Kg/Mq (approx)</b> Kgs/Sqm (approx)	3	6
<b>decoro a parete</b> wall decor	●	
<b>soffitti piani - volte a botte</b> flat ceilings - barrel vaults	●	
<b>SPA - docce - hammam</b> SPA - showers - hammam	●	
<b>pavimenti a basso traffico</b> low pedestrian traffic floors	∅	●
<b>pavimenti ad alto traffico</b> high pedestrian traffic floors	∅	∅
<b>vasche d'acqua</b> water basins		contattaci contact us
<b>n. moduli/Mq</b> modules/Sqm	~ 12	~ 12
<b>n. moduli/box</b> modules/box	25	17
<b>fuga tra moduli (mm)</b> joints between modules (mm)	< 0,1	< 0,1
<b>spessore collante (mm)</b> glue thickness (mm)	0,5	0,5
<b>tipologia collante</b> glue type	epossidico bicomponente epoxy bicomponent	
<b>tipologia stucco</b> grout type	epossidico bicomponente epoxy bicomponent	

# Informazioni tecniche

Technical info



## Prestazioni

I prodotti in collezione sono sviluppati per applicazioni decorative in interni o in ambienti esterni protetti dalle intemperie.

I moduli mutaforma consentono tempi di posa inferiori rispetto ai sistemi tradizionali grazie ai bordi tagliati a laser che garantiscono un incastro “maschio - femmina” prespaziato agevolando il lavoro di posa.

Lo spessore di pochi millimetri rende il materiale mutaforma idoneo per essere posato anche su superfici esistenti opportunamente rasate.

Il ridotto peso al mq garantisce vantaggi nel trasporto ed evita lo scivolamento del materiale nella posa in verticale.

## Material performances

*These products are suitable for decorative interior applications and sheltered exterior uses.*

*Mutaforma's hypertechnological support modules guarantee optimized laying time thanks to the puzzle-like joints technology that permits to ease the installers.*

*Being only a few millimeters thick, mutaforma's material can be laid directly on existing levelled surfaces.*

*The limited weight per square meter grants advantages in transportation and handling costs and avoids vertical slip while laying.*



## Per una posa a regola d'arte

1. Controllare che il sottofondo sia perfettamente liscio, coeso, maturato e privo di asperità. Il materiale mutaforma è copiativo al pari di una carta da parati.

2. Stendere il giusto spessore di collante tramite l'apposita spatola dentata fornita in dotazione. Controllare lo spessore del collante.

3. Consultare le mappe di posizionamento e il manuale di posa contenuti nella confezione. Video: [vimeo.com/mutaforma/laying](https://vimeo.com/mutaforma/laying)

Le operazioni di taglio devono essere effettuate con disco diamantato o waterjet.

## The perfect laying

1. *The substrate must be perfectly smooth, cohesive and well dried. Avoid bumps and dips: mutaforma's material behaves like a decorative wallpaper.*

2. *Spread the right quantity of glue using the specific spatula. Mutaforma's material requires only a thin layer of glue.*

3. *Follow the enclosed manuals and data sheets. Watch the video: [vimeo.com/mutaforma/laying](https://vimeo.com/mutaforma/laying)*

*Cuts can be made with diamond disc or waterjet.*



## Pulizia ordinaria

Utilizzare un panno pulito imbevuto di un comune detergente domestico per vetro o una miscela di acqua calda e alcol. Detergenti e panni abrasivi potrebbero opacizzare il vetro. Non utilizzare sostanze acide o corrosive.

## Daily cleaning

*Use a soft cloth imbued with a domestic glass-cleaner or a mixture of hot water and alcohol. Abrasive products may matt glass. Do not use acid or corrosive detergents.*



## Illuminazione ottimale

La brillantezza del materiale viene esaltata da sorgenti luminose frontali quali: finestre, spot e luci diffuse. Si sconsiglia l'uso di luci radenti.

## Lighting tips

*Material brightness is enhanced by frontal lighting sources such as: windows, diffused lights, focused spotlight. Avoid grazing lights.*



## Scivolosità in ambienti umidi

Classe di resistenza: R 10 (DIN 51130:2004)

Per maggiori informazioni tecniche: [tech@mutaforma.com](mailto:tech@mutaforma.com)

## Slipperiness in humid environments

Resistance class: R 10 (DIN 51130:2004)

For more info, please contact: [tech@mutaforma.com](mailto:tech@mutaforma.com)

**mutaforma**

a brand of DG Mosaic s.r.l.  
via Einstein, 86  
20010 Marcallo - Milano, Italy  
**t**+39 0297254101  
**f**+39 029753098  
info@mutaforma.com  
www.mutaforma.com



#mutaforma  
#augmentedmaterials  
#tilla

Printed in Italy  
10-2018

**I colori riprodotti nel presente catalogo possono differire dai colori dei prodotti reali. L'azienda migliora costantemente la qualità della propria produzione e si riserva il diritto di modificare in qualsiasi momento le caratteristiche dei prodotti presenti in questo catalogo. Questo catalogo è fornito gratuitamente ed è proprietà di Mutaforma e non può essere oggetto di vendita. Vietata la riproduzione anche parziale. TILLA® e mutaforma sono marchi registrati di proprietà di DG Mosaic s.r.l. - All Rights Reserved. 2017.**

*Please note that product's colours may differ from their printed representations.*

*Mutaforma is constantly improving the quality of its products and reserves the right to change the characteristics of products included in this catalogue at any time. Copy forbidden.*

*This catalogue is distributed free of charge. It may not be sold, and it remains property of Mutaforma.*

*TILLA® and mutaforma are registered trademarks property of DG Mosaic s.r.l.*

*All Rights Reserved. 2017.*

**mutaforma**

**second edition**